

TELEVISION TECHNICAL BULLETIN

MODELS 51CS03H 59CS03H 66CS03H

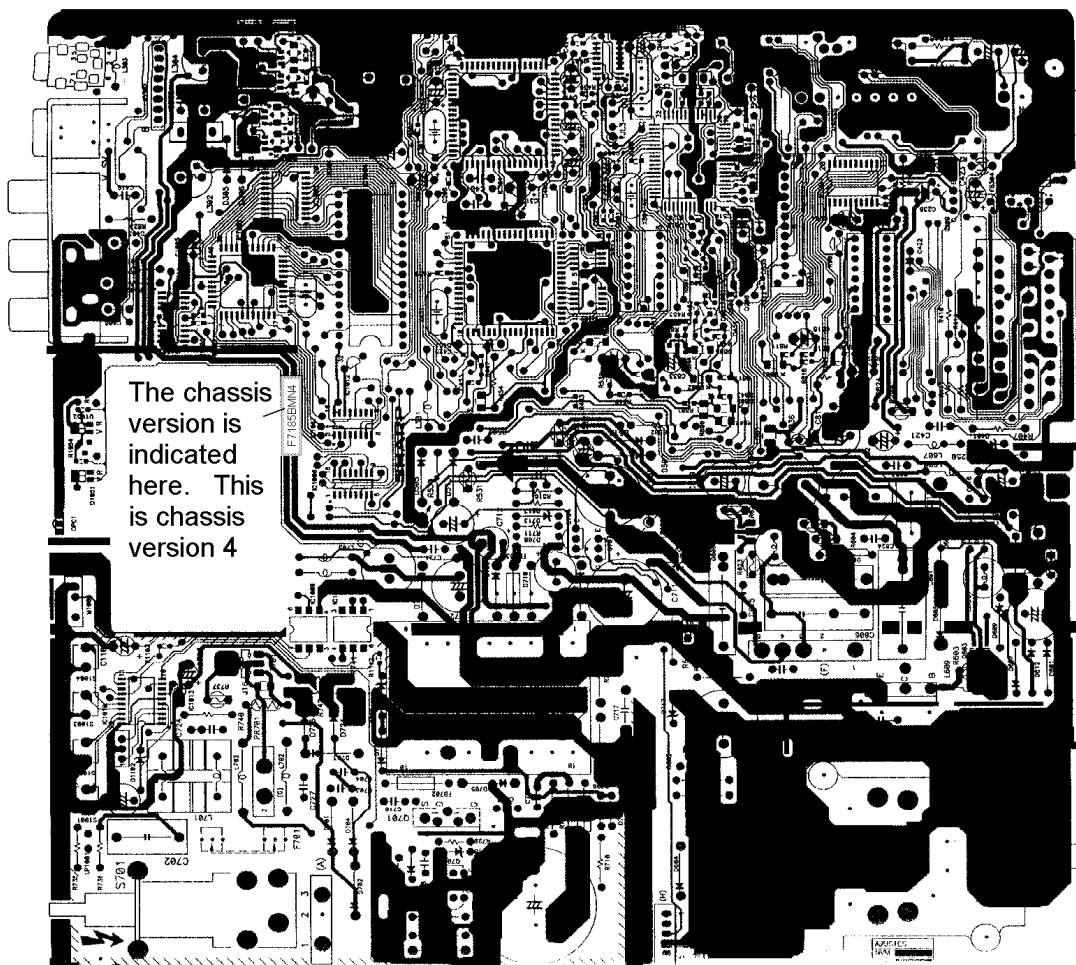
REASON From version 4 of this chassis, various changes have been made to the circuit.

ACTION When servicing chassis versions 4 or greater (see diagram below) use the 51CS05H (Part number SEKL51CS05H/1) or the 59/66CS05H (Part number SEKT66CS05H/2) service manuals.

Changes to the 51CS03H, 59CS03H and 66CS03H circuitry are :-

- 1. An audio mute circuit now incorporated into the chassis.
- 2. R631 and R632 have been added in series to the vertical +/-13V supplies.

For the 59CS03H and 66CS03H only R628, D616 and D621 have been added to the +45V supply line from the line output transformer.



Sharp Electronics (UK) Limited CE Technical Support Group

Originator *AW* Supervisor _____ Approval Date ___/___/___ Reference **AM 110398**

White - Carry out as required Yellow - Carry out as required and whenever unit comes in for service Red - Carry out on all units

